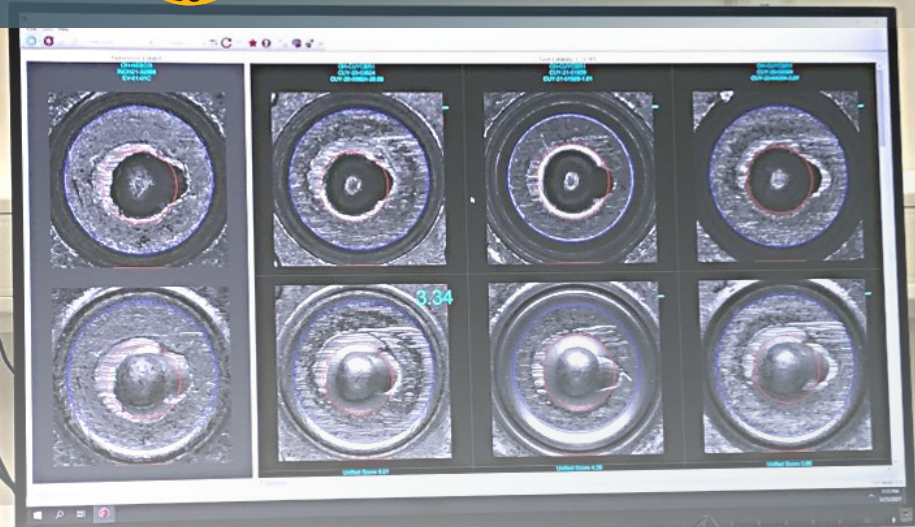
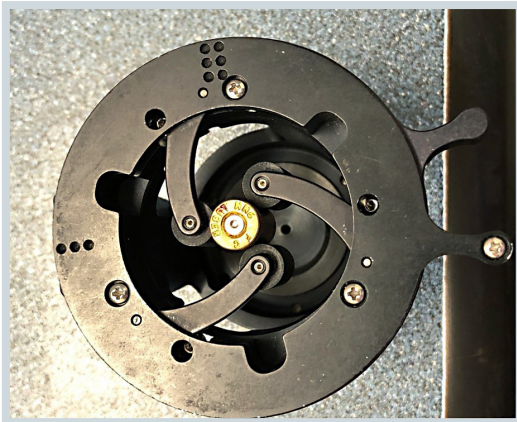




DAVE YOST
OHIO ATTORNEY GENERAL



Building a better NIBIN



**Why all law
enforcement
agencies
should use it**

WHAT IS NIBIN?

- The National Integrated Ballistic Information Network (NIBIN) is an automated ballistic-imaging tool that allows for the comparison of fired cartridge cases in order to link crimes involving the same firearm.
- NIBIN is administered by the U.S. Bureau of Alcohol, Tobacco, Firearms and Explosives (ATF).

WHAT DOES IT DO?

- NIBIN compares digital images of submitted fired cartridge cases against the ATF's database of existing images of fired cartridge cases. If an association is made between cartridge cases, law enforcement is notified and provided an investigative lead.

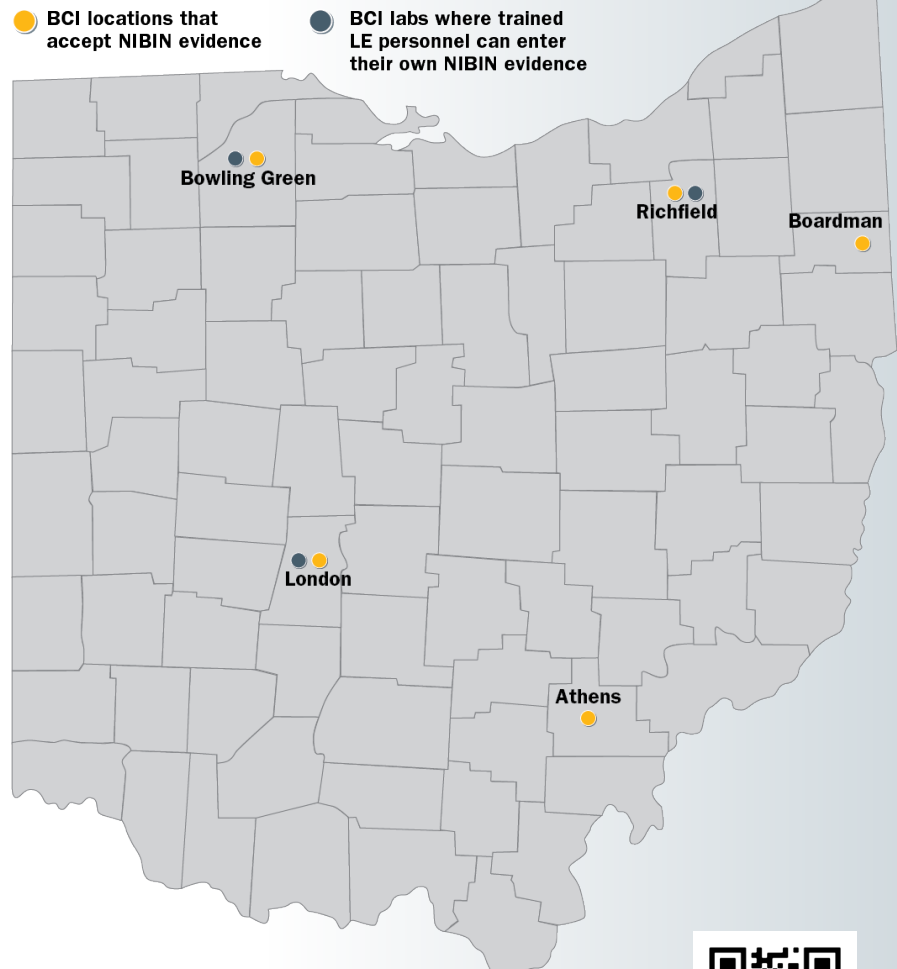
HOW DO YOU USE NIBIN?

- The NIBIN process begins with the submission of a fired cartridge case to the Bureau of Criminal Investigation (BCI), where a digital image of the cartridge case is entered into the database.
 - » Prior to submitting physical evidence to a BCI laboratory, you should complete a pre-log application in OHLEG.
 - » Submit to the closest BCI evidence receiving location (Athens, Richfield, Boardman, Bowling Green and London).
- If a lead is obtained, information surrounding the previous incident(s) is forwarded to the submitting agency.

WHY SHOULD YOU ROUTINELY USE NIBIN?

- **The richer the database, the more effective NIBIN becomes.** NIBIN is built on previous submissions, so it's usefulness as a crime-fighting tool increases as more and more agencies populate the database with evidence in real time.
- **Speed matters.** Timely submissions are crucial to connecting otherwise-unlinked crimes, giving investigators the best chance to identify and arrest shooters before they re-offend.
- **Crime-fighting is collaborative.** Sharing information among agencies on the local, state and federal levels can solve more cases. When a NIBIN lead is returned, the weapon may be in another jurisdiction.

BCI-affiliated NIBIN sites



HOW CAN BCI HELP?

- Submission policies are available on the Attorney General's Office website. (Navigate to BCI/Laboratory Division/Firearms & Toolmarks.)
- BCI is developing training videos on collecting and submitting evidence, swabbing NIBIN evidence for DNA and following up on a correlation.
- Trained/authorized law enforcement personnel can enter their own NIBIN evidence at any of BCI's three laboratories — in London, Bowling Green and Richfield.



Scan this code to watch how NIBIN helped solve an Ohio homicide.



DAVE YOST
OHIO ATTORNEY GENERAL



QUESTIONS ABOUT NIBIN?

Reach out to BCI Comparative Sciences Manager
Jennifer Duvall: Jennifer.Duvall@OhioAGO.gov